

# TATES

020 7602 6020



## Edith Villas, London W14 9AB

**£2,500 Per month**

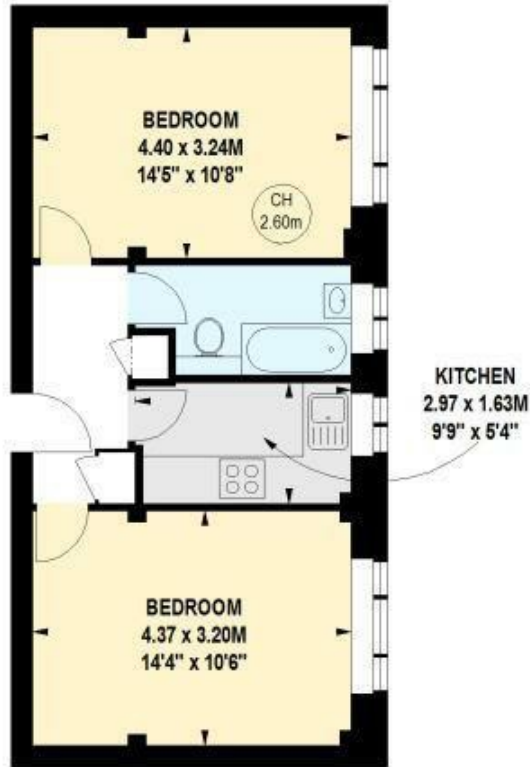
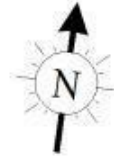
- One/Two Bedroom Apartment
- Available 15/08/2026
- Furnished
- Close To West Kensington Tube Station

# West Kensington Court, W14

Approximate gross internal area

42.64 sq m / 459 sq ft

Key :  
CH - Ceiling Height

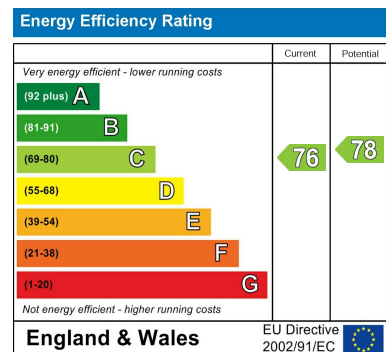


## Third Floor

This floor plan is a representation for guidance purposes only, not for valuation. Any figure is approximate and must not be relied on as a statement of fact. Copyright of Wyatt Dixon Homes



Whilst these particulars are produced in good faith and are believed to be correct, no guarantee is given, nor any responsibility accepted, by Tates nor by any of its representatives, for their accuracy. The particulars do not constitute part of any offer or contract, and it is recommended that such things as measurements, condition, structure, services, appliances, fixtures and fittings and facilities are all independently assessed by the prospective purchaser or renter of the subject property prior to committing to any contract.



135 Hammersmith Road, West Kensington, London W14 0QL

mail@tatesestates.co.uk

tatesestates.co.uk

Tates (Agents) Ltd. Registered in England and Wales No. 02356337  
Registered Office: Imperial House, 8 Keane Street, London WC2B 4AS

